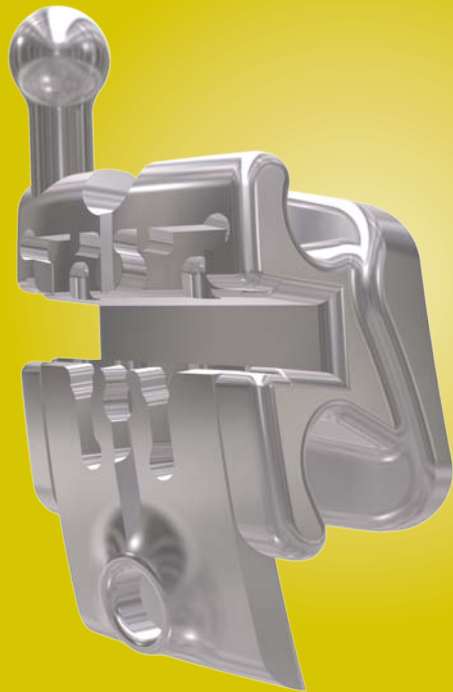


The New Standard for Self-ligating Systems Is Here!

Carrière SLB™

SELF-LIGATING



- **MECHANISM LOCATED IN THE FACE**
With normal good hygiene, the patient will also clean the clip, helping to keep it functioning freely and easily while minimizing plaque build-up.
- **NICKEL-FREE SLB**
For increased biocompatibility and acceptance.
- **CLIP PROVIDES PASSIVE ENGAGEMENT**
Reducing friction and improving sliding mechanics for faster treatment.
- **SINGLE PIECE MIM CONSTRUCTION**
Stronger with precision dimensions and detail
- **ELEGANTLY SIMPLE DESIGN, ONLY THE CLIP MOVES**
Reducing the possibility of clip malfunction.
- **LOWEST SLB PROFILE IN THE INDUSTRY**
Easy to place with improved patient comfort.



In-Ovation-R



Time



Damon



Carrière SLB

- **OPENS W/EXPLORER, CLOSSES W/FINGER**
Offers quick and easy wire changes. Securely closed and locked during treatment.
- **STRATEGIC WIRE SEQUENCE AVAILABLE FOR OPTIMAL RESULTS**

ClassOne
ORTHODONTICS

Order today!

1-800-343-5291
www.ClassOneOrthodontics.com